

# albedor

## the complete collection

Effective 1st January 2026



# welcome to albedor

Albedor Industries is an Australian family business which has been manufacturing quality cabinet doors and panels since 1979.

At Albedor, we've built our success on a simple philosophy: never compromise on quality and style.

Albedor is well known in the cabinet making industry for our stable lead times and consistent output. This makes it an attractive proposition for cabinet makers, builders, architects and designers who need to know their products will be available as planned.

## the complete collection

The complete collection is the essential guide to Albedor products and accessories. It's often the smallest details that make the difference, at Albedor we have compiled these key products for your next renovation or new build.

For more information please refer to our website [www.albedor.com.au](http://www.albedor.com.au)



door design: faceline V20    finish/colour: satin spruce

# thermo formed doors and panels

Albedor Thermo Formed doors are available in a selection of plain, routed, recessed or lineal door designs and are finished in a wide range of decorative films including Plain, Satin, Matt, Super Matt and Plain Gloss finishes. Thermo Formed doors are manufactured to the highest quality using a thermoforming process that results in a door with a seamless edge and a durable long lasting surface. The reverse side of our Thermo Formed doors have a white melamine finish to compliment the white internals of the cabinetry. Thermo Formed doors are supplied complete, finished and ready to hang by your installer.

## Key Features

- Durable and practical in the kitchen environment and other vertical interior applications.
- Easy to clean.
- Seamless edges.

## Specifications

- Foils/Finishes used are a PVC (Polyvinyl Chloride) thermoplastic of varying thicknesses.
- Substrate is E0 18mm MR MDF (Moisture Resistant Medium Density Fibreboard) with a white melamine back.
- Low VOC Certification (Low Volatile Organic Compounds Emissions).
- Nominal 18mm thickness plus foil/finish thickness (18.3-18.7mm). Other thicknesses can be manufactured on enquiry.

## General

- Manufactured in Victoria.
- 7 year warranty.

For more information please refer to our website [www.albedor.com.au](http://www.albedor.com.au)



door design: faceline V65    finish/colour: antrazite matt



# decorative board (cut & edge)

Albedor provides a supply and processing service on the following cut & edge decorative board products:

Polytec Melamine Board  
Laminex Melamine Board  
Formica Melamine Board

Melamine Board is available in a wide range of plain colour and timber grain decors, on both 16mm and 18mm thick substrates with matching edges.

Navurban decorative board is a premium range of timber grain decors available in various thicknesses with matching edges.

## Key Features

- Durable and practical in the kitchen environment and other interior applications.
- Hard wearing for vertical application.
- Crisp square edge.

For more information please refer to our website [www.albedor.com.au](http://www.albedor.com.au)



product range: melamine doors

# raw doors (for paint)

Albedor Raw doors (for paint) are manufactured using the highest quality materials and are supplied raw to be painted and finished by others in the colour/finish of your choice. All of our Thermo Formed door profiles are available in raw for paint, as well as some designs specific to our Raw door range eg: finger pull and square internal profiles. Raw doors are generally supplied with a square edge but other edge details are also available. Albedor also have a range of decorative items to compliment your doors, supplied raw ready to paint. These doors (in their painted state) are also known as 2pack, Poly doors or Emporite doors.

## Key Features

- Unlimited colour and finish choice.
- Can have square internal edges.
- Can have a high gloss or satin finish on all recessed and routed profiles.
- Seamless edges (no lines).

## Specifications

- Substrate is E0 18mm MR MDF (Moisture Resistant Medium Density Fibreboard) double sided white melamine.
- Bolection Mould doors are supplied as a 2 piece door.
- Raw MDF (no melamine) is also available on request. Recessed profiles are supplied as a 2 piece door with the insert centre panel fixed in.
- Nominal 18mm thickness however other thicknesses can be manufactured on enquiry.

## General

- Manufactured in Victoria.

For more information please refer to our website [www.albedor.com.au](http://www.albedor.com.au)





product range: raw doors (for paint) design: faceline V12

# carcases

Albedor carcase components are manufactured to custom sizes from the highest quality Australian Made E0 moisture resistant 16mm white particle board with matching PVC edging. Carcase components are pre-drilled for assembly holes, hinge plates, drawer runners, fixed or adjustable shelving and come with 16mm solid backs.

## Key Features

- Practical and easy to assemble. All carcases are supplied UNASSEMBLED.
- Save time and money, component list available on request.

## Specifications

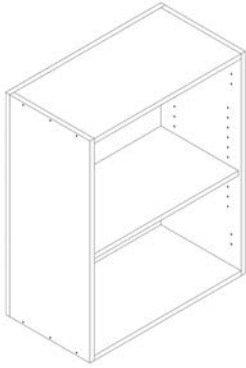
- Substrate is E0 16mm Australian Made (Moisture Resistant Particle Board).
- White melamine finish (other Decorative Board available on request).
- 1mm White PVC Edging (other colours available on request).
- Drilled with fixed or adjustable shelves.
- Cabinets all include a 16mm solid back.
- Hinge hole positions drilled to your request (standard 100\\100).
- Can supply a range of various hardware options.

## Carcase Units Available:

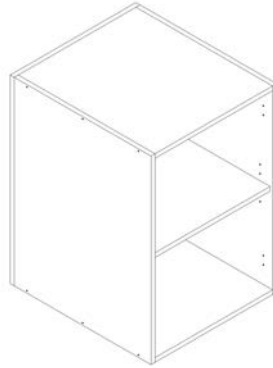
- |                                  |                                 |
|----------------------------------|---------------------------------|
| • Base cabinet solid top         | • Base cabinet return left hand |
| • Base cabinet top rail          | • Overhead cabinet              |
| • Base cabinet vertical rail     | • Overhead corner               |
| • Drawer cabinets                | • Pantry cabinet                |
| • Drawer box                     | • Corner walk in pantry         |
| • Corner cabinet 90 degree       | • Corner pantry 45              |
| • Corner cabinet variable angle  | • L shaped shelves              |
| • Under bench oven cabinet       | • Broom cabinet                 |
| • Base cabinet wall oven         | • Appliance cabinet             |
| • Base cabinet return right hand |                                 |

## General

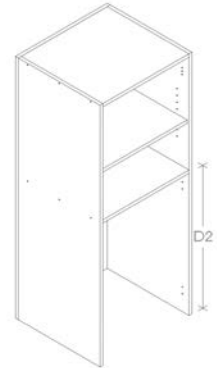
- Manufactured in Victoria.



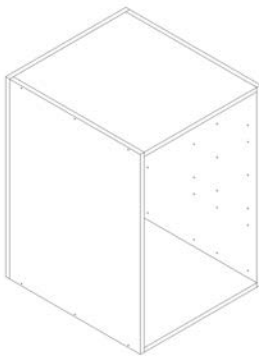
Overhead cabinet



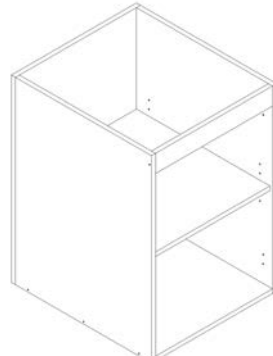
Base cabinet



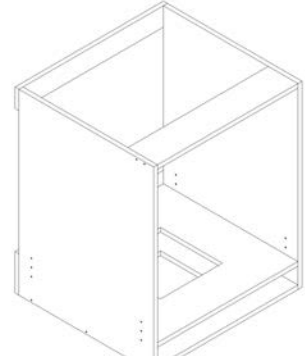
Appliance cabinet



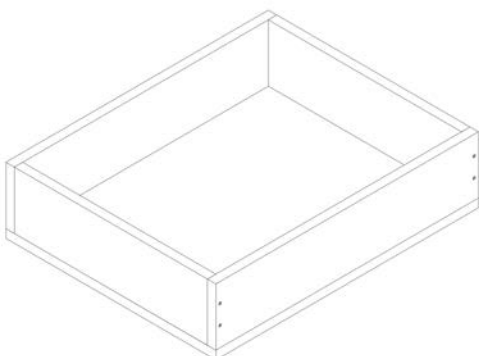
Drawer cabinet



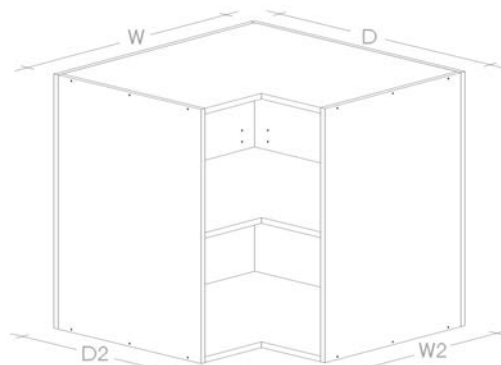
Base cabinet sink



Under bench oven cabinet



Drawer box



Over head corner cabinet

more options available – see carcass brochure

# wrap around panels

Albedor Wrap Around Panels enable end panels to be wrapped on the return side without any unsightly joins. Wrap around panels are ideal for fridge panels, end panels and floating shelves.

## Key Features

- Available in all thermo formed and ultra finish colours and finishes.
- Profiles and flutes can be machined into face and front edge of thermo formed wrap around panels.

## Specifications

- Substrate is E0 18mm MR MDF (Moisture Resistant Medium Density Fibreboard).
- Thermo formed up to 2400mm Length. Ultra Finish over 2400mm Length P.O.A.
- Various thicknesses available.

## General

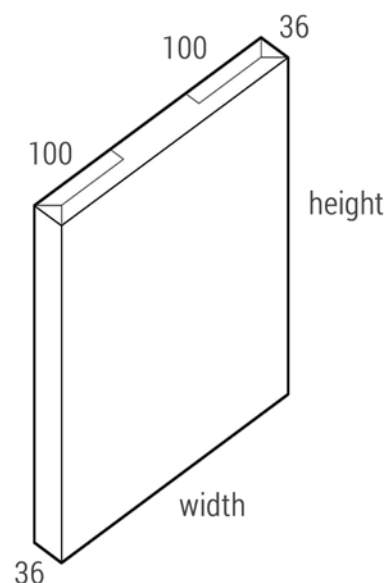
- Manufactured in Victoria.
- 7 year warranty.

Example:

1. Find the appropriate Finish page of the price list
2. Find the appropriate Routing price category
3. Look up the equivalent door size

Example - wrap both ends

Route: Holly  
Finish: Satin White  
Panel Size: 900mm (h) x 600mm (w) x36mm  
Return length: wrap both ends 100mm



For more information please refer to our website [www.albedor.com.au](http://www.albedor.com.au)





product range: wrap around panels    finish/colour: faceline V12    finish/colour: white grey super matt

# roller doors

Albedor Roller doors are of the highest quality, design and functionality, complementing evolving trends and styles, ensuring an outstanding interior concept.

## Key Features

- Available in all thermo formed and ultra finish colours as well as some timber veneer, solid timber, MDF, laminate and aluminium.
- Available fully motorised with remote control by request.

## Specifications

- Roller doors are manufactured to your required size.
- Up to 2400mm Height x 1200mm Width or 1200mm Height x 2400mm Width.
- Handle options are Extruded (standard), Aluminium or No Handle. Lock is optional.
- Track colour white.

## General

- Manufactured in Australia.

For more information please refer to our website [www.albedor.com.au](http://www.albedor.com.au)



product range: roller door

# finger pull rails

Albedor Finger Pull Rail profiles allow for handle-free doors and drawers to create a streamlined appearance. The finger pull rail is fitted to the carcass to create a gap for the finger pull access.

## Key Features

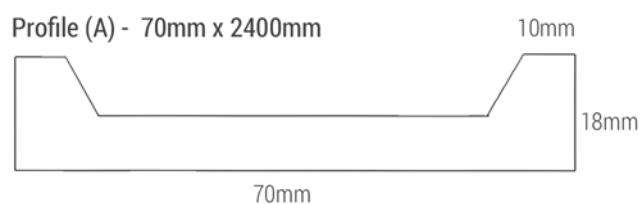
- Available in all thermo formed colours and finishes or raw for paint.
- Handle free doors and drawers.

## Specifications

- Substrate is E0 18mm MR MDF (Moisture Resistant Density Fibreboard).
- Profile (A) 70mm x 2400mm or profile (B) 50mm x 2400mm (see diagram below).

## General

- Manufactured in Victoria.
- 7 year warranty.



For more information please refer to our website [www.albedor.com.au](http://www.albedor.com.au)





product range: finger pull rails

# decorative panels

Albedor Decorative Panels give an extra dimension to design features in your home and can be used as kitchen islands and bar backs. Decorative panels are also used as joinery finishes in commercial projects such as hotels, retail outlets, restaurants/bars and reception areas. If Decorative Panels are to be specified for use as opening doors and drawers we recommend the use of 25mm thick substrate.

## Key Features

- Available in most thermo formed colours and finishes or raw for paint

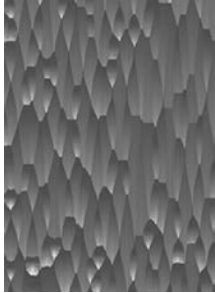
## Specifications

- Substrate is E0 18mm MR MDF (Moisture Resistant Density Fibreboard) with white melamine back.
- Nominal 18mm thickness however other thicknesses can be manufactured on enquiry.
- Thermo formed up to 2400mm x 1200mm or raw for paint 3600mm x 1200mm
- All designs are available as landscape or portrait on sheet. Pattern match from sheet to sheet available on request.

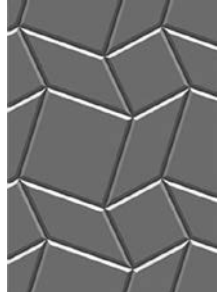
## General

- Manufactured in Victoria.
- 7 year warranty.

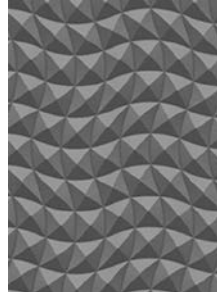
For more information please refer to our website [www.albedor.com.au](http://www.albedor.com.au)



Aero



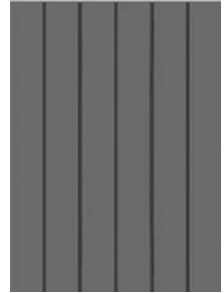
Cubed



Diamond Back



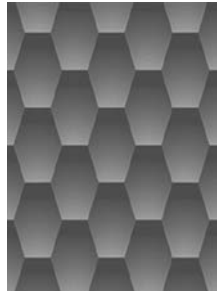
Dunes



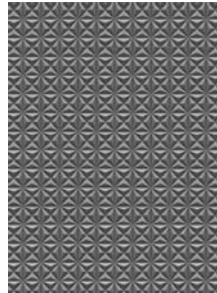
Faceline



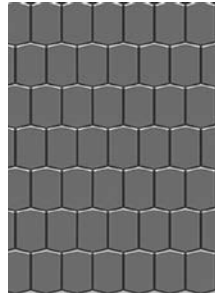
Herringbone



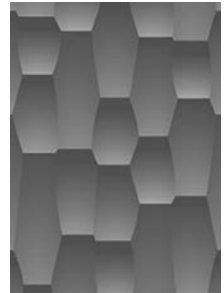
Hexagram



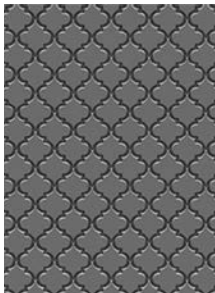
Modena



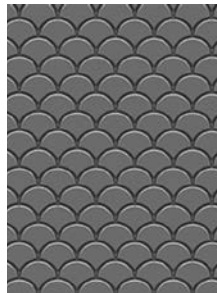
Newform



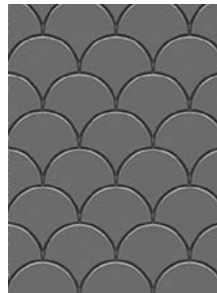
Organic



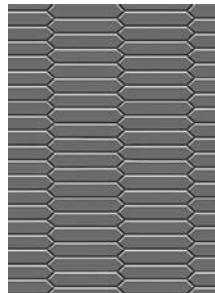
Regal



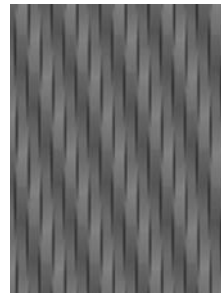
Scale 1



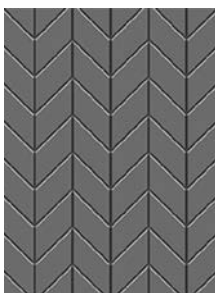
Scale 2



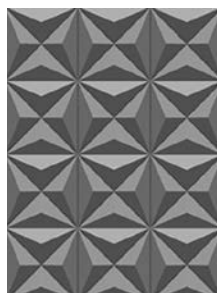
Splashback



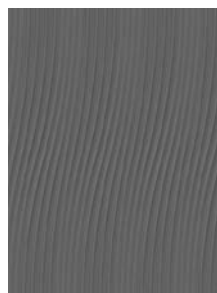
Stacked Stone



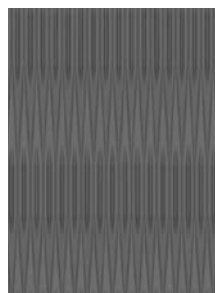
Tread



Vector



Wave



Weave



▲ Not recommended  
for gloss finishes



Albedor Industries Pty Ltd  
7 Research Drive Croydon South VIC 3136  
Ph (03) 9761 6330  
[albedor@albedor.com.au](mailto:albedor@albedor.com.au)

For more information please refer to our website  
[www.albedor.com.au](http://www.albedor.com.au)

